

Report to: **Scrutiny Committee for Children's Services**

Date: **23 November 2009**

By: **Director of Children's Services**

Title of report: **Local Area Agreement (LAA) Not in education or Training (NEET) Update**

Purpose of report: **To inform members of our performance against the LAA NEET target**

---

**Recommendations: The committee is recommended to consider and comment on performance being made against the Local Area Agreement (LAA) Not in education or Training (NEET) target and the actions in place to improve progress**

---

## **1 Background Information**

1.1 The Local Area Agreement (LAA) target for those Not in Education or Training (NEETs) is 6.2% for 2009/10, this annual figure is calculated from an average of the NEET figures for the three months Nov, Dec and Jan (2010). The target for 2008/09 was 7.0% with a stretch target of 5.2%.

1.2 For the past three years our annual NEET figure in East Sussex has decreased year on year, from 7.88% in 2006/07 to 7.66% in 2007/08 to 7.21% in 2008/09 (Appendix 1: table 3). This decrease has not however been significant enough to meet our LAA targets.

1.3 The national NEET figure in August 2009 was 8.70%, the South East figure was 7.10% and the East Sussex figure was 8.68%. The data shows that we were above the national figure until April and since then have been just below the national figure, we are consistently above the South East figure (Charts 3 and 4). A further analysis of NEET data by Local Authority (LA) in the South East shows that we are about mid-way between the highest and lowest performing LAs. With the highest LA having a NEET figure of 13.8% and the lowest 4.9%.

1.4 Nationally and regionally the NEET figures have been increasing since June 2009, this is attributed to the current economic climate with fewer young people entering employment with or without training. This statement is backed up by increases in local youth unemployment figures, and an analysis of the NEET data that shows that fewer young people are leaving the NEET group to enter employment compared to previous years. In East Sussex in April 2008 19.29% of 16-18 year olds were in employment, in August 2009 this figure had fallen to 13.35% (Table 3).

1.5 Whilst our NEET figures are increasing we are however increasing the number of 16-18 year olds in learning, in April 2006 we had 71.91% in learning in July 2009 (the last reliable month for in learning data) we had 78.06% in learning (Table 3). This figure is higher for 16 year olds and lower for 18 year olds which suggests that we are having more success encouraging young people to stay on in learning.

## **2 Current NEET figures for East Sussex**

2.1 The data (Chart 4) shows that the NEET figure fell between April and May 2009 but that since May 2009 the NEET figure has been increasing.

2.2 In August each year the NEET data begins a trend that is repeated each year that shows increasing numbers of NEETs and unknowns. This is caused by:

- a) school and college leavers informing Connexions, in July and August, that they are NEET (to access Job Seekers Allowance).
- b) the conversion, at the end of August, of all Year 11 school leavers from being in statutory education to being unknown, resulting in a peak in the NEET figures and in the unknowns in September

c) the 16-18 cohort being at its smallest for the year in August prior to the addition of the Year 11 school leavers to the cohort in September.

2.3 This trend is resolved in September through the collection of enrolment data from colleges and sixth forms and tracking by Connexions Personal Assistants to confirm the correct situation of all Year 11 school leavers. The NEET figure in September 2009 was 9.6% which is lower than it was in September 2008 by 14% (Table 3), this can be attributed to the timely return of enrolment data from colleges and school sixth forms.

2.4 There has however been a drop in the number of young people NEET this month, falling to 862, a drop of 50 from August (Table 1). This can be explained by an increase in the number of NEET leavers compared to previous months, the majority moving on to FE.

2.5 The key headlines from the September data are: i) the number of NEET young people has reduced more than expected this month ii) the percentage adjusted NEET is showing its expected annual peak caused by school leavers iii) the number of young people joining the NEET group continues to fall iv) the number of young people leaving the NEET group has jumped significantly this month

2.6 There are significant geographical differences between areas in East Sussex as shown in the data (Tables 2). Hastings and Eastbourne have much higher NEETs than other areas.

### **3 Activities to reduce NEETs**

3.1 The LAA NEET Action Plan (attached at Appendix 2) details the actions being taken across a range of partners to reduce NEETs. The Action Plan is monitored by a multi-agency LAA NEET Group. Key actions over the last year have focused on: i) preventive NEET work ii) post-16 activity to re-engage young people back into learning.

3.2 Preventive NEET work focuses on working with 14-16 year olds and supporting their progression onto post-16 education, this includes: Key Stage 4 pre-engagement programme, ESF funded Summer Transition programme, successful LAA Exemplar bid working with 14-16 year olds in the Rother area, publication of good practice guidance for post-16 progression, development of a Risk of NEET Indicator (RONI) pre-16 and post-16 to help schools and colleges to identify young people at risk. We are also developing a Vulnerable Learner's protocol and have already agreed protocols with specific groups to support progression.

3.3 Post-16 activity to re-engage young people back in learning includes: the successful implementation of the September Guarantee, with 95% of all 16 year olds having an offer of education or training in September 2009, and 84% of all 17 year olds. This included the running of a Clearing House event in September to help those without offers to meet providers and gain places. Development of new provision and co-ordinated Connexions support for teenage parents, establishment of a 'Client Fund' to provide limited financial support to young people at risk of becoming NEET or NEET, roll-out of a short pre-engagement programme 'Fast Lane' to support young people to progress onto formal learning, involvement in the national Entry to Learning pilot project which provides support and provision for young people who are NEET, large increases in the number of Entry to Employment (E2E) places across East Sussex with 600 in 2009/10, and further development of Level 1 and Level 2 programmes with flexible start dates throughout the year.

### **4 Conclusion and Recommendations**

4.1 To continue the activities already developed to reduce NEETs and to develop additional activities that focus on supporting those young people that would like to enter employment.

MATT DUNKLEY

Director of Children's Services

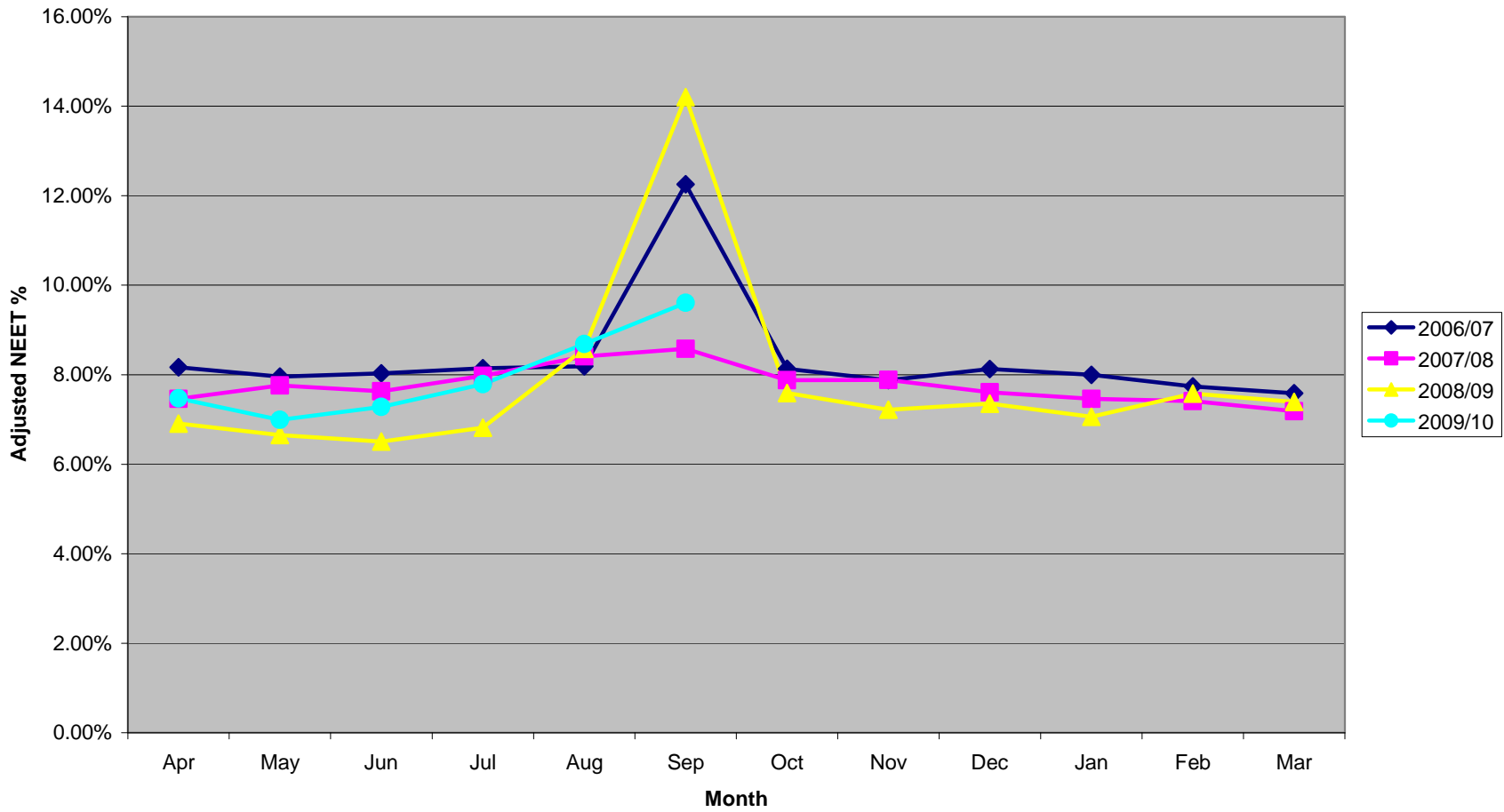
Contact Officer: Jessica Stubbings, 14-19 Development Manager Tel: 01323 463537

Local Members: All

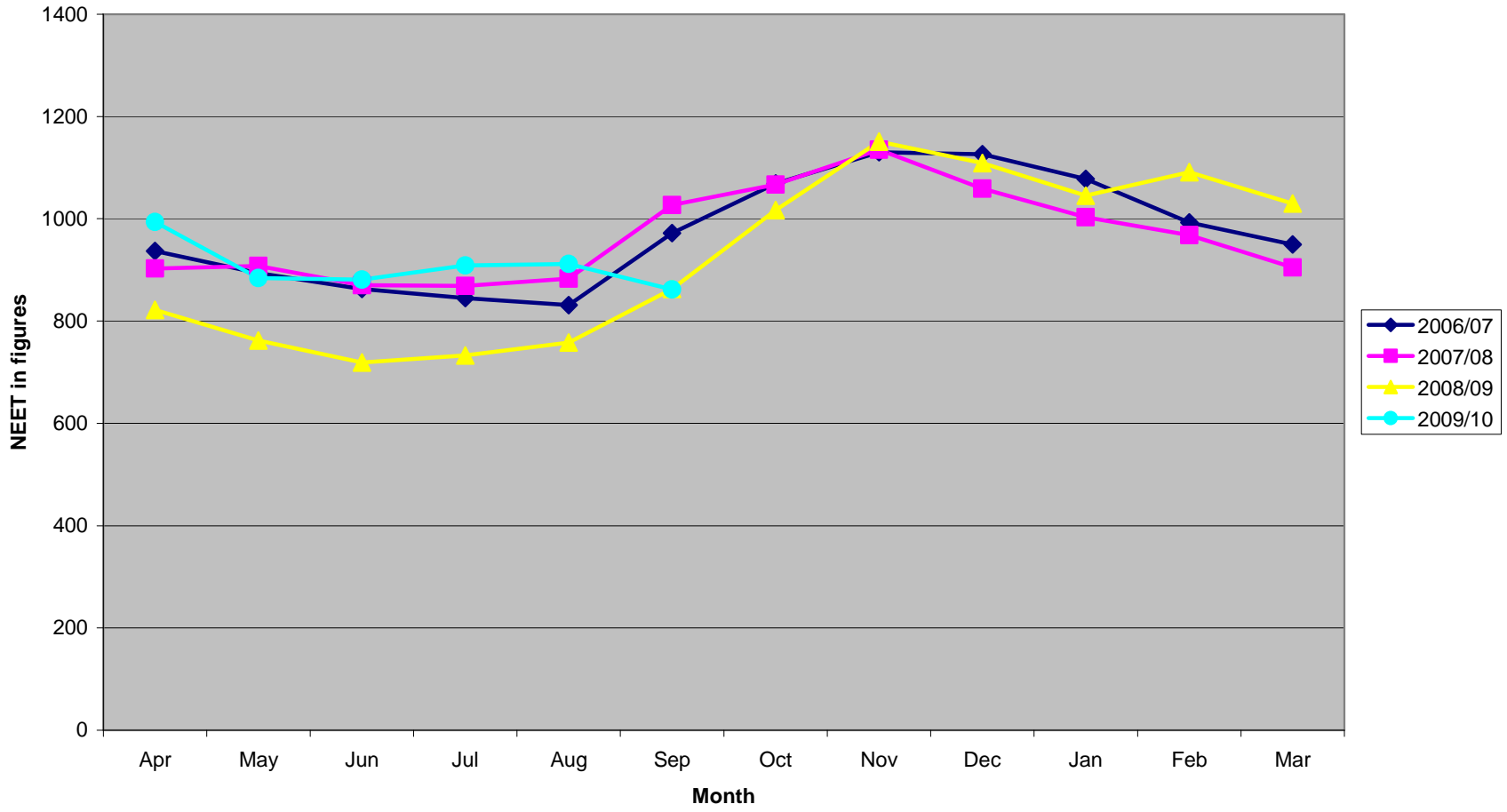
BACKGROUND DOCUMENTS: none

Agenda Item 7 Appendix 1

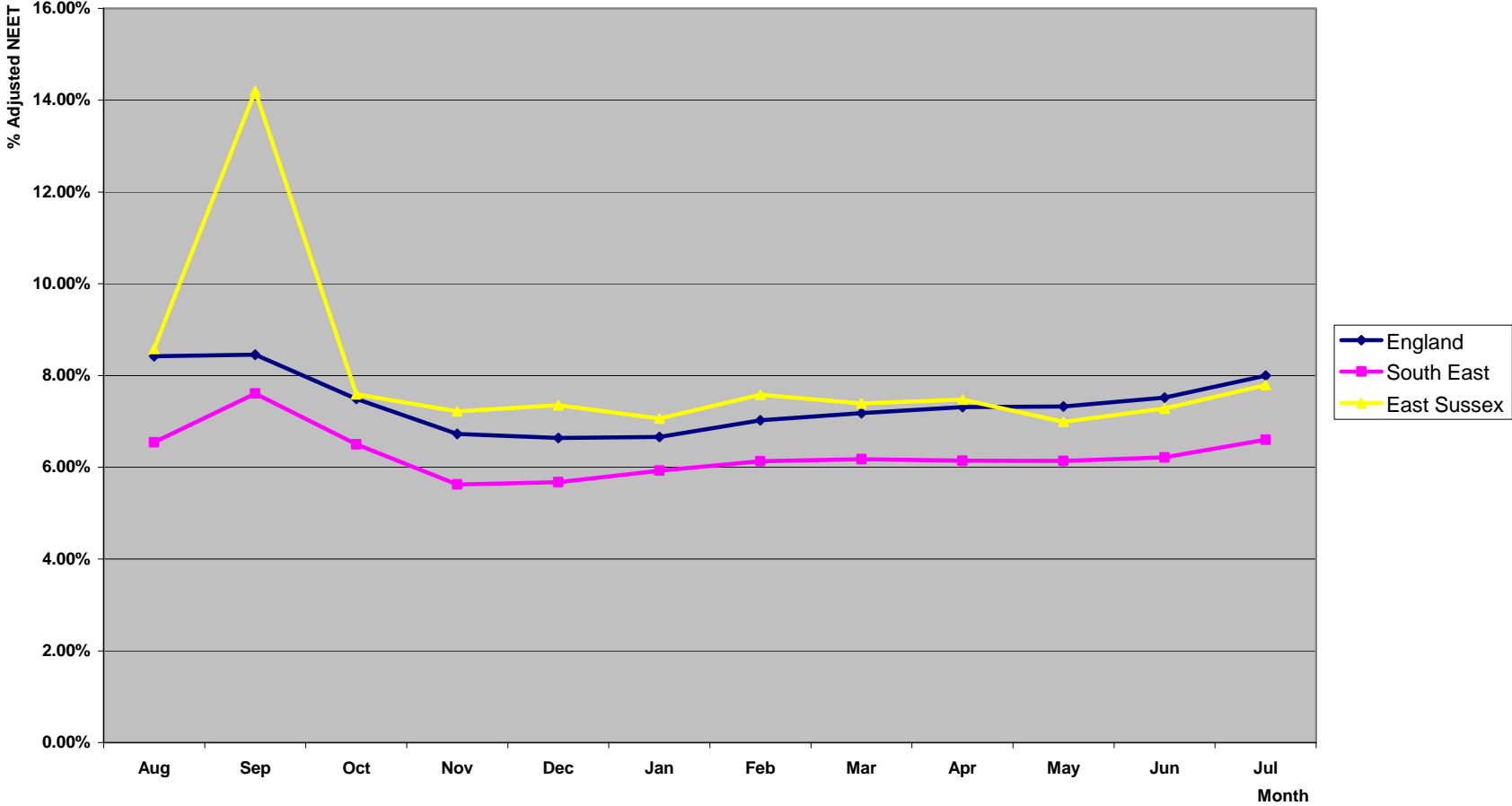
Chart 1: 16-18 Adjusted NEET %



**Chart 2: 16-18 NEET (Numbers)**

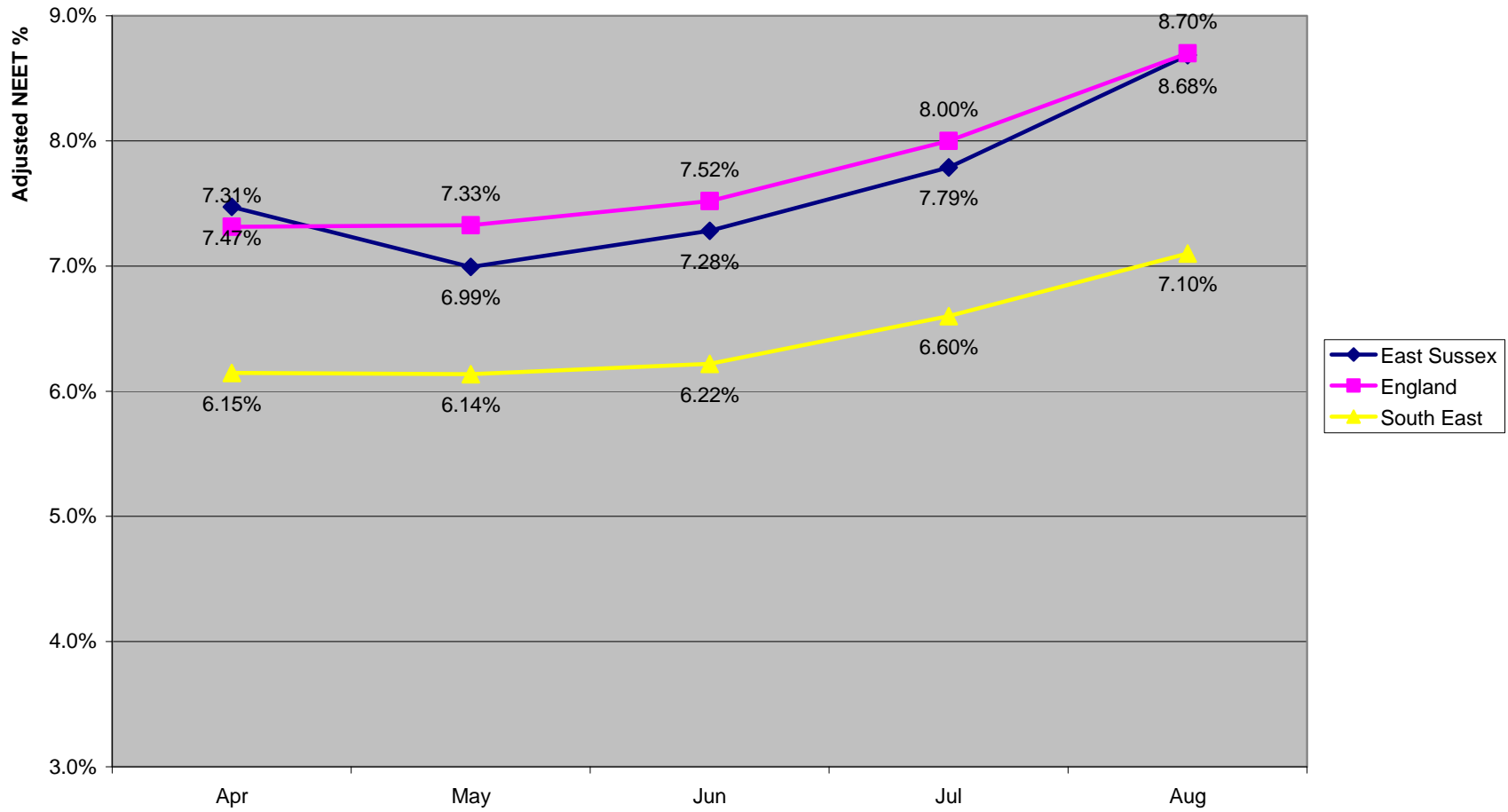


**Chart 3: 16-18 Adjusted NEET**



The peak in the East Sussex figure in September 2008 was as a result of delays in the return of enrolment data from colleges and sixth forms this did not occur in previous years or in 2009.

**Chart 4: Adjusted NEET % Comparion 2009-10**



**Table 1: East Sussex NEET Figures**

16-18 NEET	Apr	May	Jun	Jul	Aug	Sep	Oct	Nov	Dec	Jan	Feb	Mar
2008/09							1017	1151	1109	1045	1091	1030
2009/10	994	884	881	909	912	862						

**Table 2:  
Average number NEET Nov - Dec 2008/09**

	Eastbourne Downs	Hastings	Lewes Coastal	Lewes Rural	Rother	Wealden
2008/09	286	363	129	66	165	104
Average % Adjusted NEET (Nov ,Dec, Jan)						
	Eastbourne Downs	Hastings	Lewes Coastal	Lewes Rural	Rother	Wealden
2006/07	8.35%	11.74%	7.19%	0.00%	8.38%	3.01%
2007/08	7.51%	11.76%	6.55%	0.00%	8.72%	3.41%
2008/09	6.83%	10.87%	7.66%	5.67%	8.04%	4.01%

**Table 3: East Sussex % NEETs**

<b>16-18 Adjusted NEET %</b>	<b>Apr</b>	<b>May</b>	<b>Jun</b>	<b>Jul</b>	<b>Aug</b>	<b>Sep</b>	<b>Oct</b>	<b>Nov</b>	<b>Dec</b>	<b>Jan</b>	<b>Feb</b>	<b>Mar</b>	<b>Avg Adj NEET (Nov, Dec, Jan)</b>
2006/07	8.17%	7.96%	8.03%	8.14%	8.19%	12.26%	8.14%	7.88%	8.13%	7.99%	7.73%	7.58%	<b>7.88%</b>
2007/08	7.46%	7.76%	7.63%	7.98%	8.41%	8.58%	7.88%	7.88%	7.61%	7.46%	7.41%	7.19%	<b>7.66%</b>
2008/09	6.91%	6.65%	6.51%	6.82%	8.58%	14.20%	7.59%	7.22%	7.35%	7.06%	7.58%	7.39%	<b>7.21%</b>
2009/10	7.47%	6.99%	7.28%	7.79%	8.68%	9.61%							
<b>16-18 In Employment</b>	<b>Apr</b>	<b>May</b>	<b>Jun</b>	<b>Jul</b>	<b>Aug</b>	<b>Sep</b>	<b>Oct</b>	<b>Nov</b>	<b>Dec</b>	<b>Jan</b>	<b>Feb</b>	<b>Mar</b>	
2006/07													
2007/08													
2008/09	19.29%	18.84%	18.48%	17.94%	17.81%	12.49%	14.32%	16.11%	16.62%	16.15%	15.67%	15.39%	
2009/10	15.16%	14.78%	14.39%	14.08%	13.35%	8.88%							
<b>16-18 Unknowns</b>	<b>Apr</b>	<b>May</b>	<b>Jun</b>	<b>Jul</b>	<b>Aug</b>	<b>Sep</b>	<b>Oct</b>	<b>Nov</b>	<b>Dec</b>	<b>Jan</b>	<b>Feb</b>	<b>Mar</b>	
2006/07	5.79%	5.91%	6.30%	6.08%	5.81%	60.72%	14.91%	4.50%	4.57%	4.53%	4.85%	4.72%	
2007/08	4.52%	3.57%	3.43%	3.07%	2.93%	25.75%	10.93%	4.55%	4.47%	4.27%	4.15%	4.05%	
2008/09	4.21%	4.08%	3.88%	4.48%	19.82%	67.25%	12.43%	4.20%	4.04%	3.79%	3.77%	3.68%	
2009/10	3.69%	3.70%	3.63%	3.47%	9.48%	44.83%							
<b>16-18 In Learning</b>	<b>Apr</b>	<b>May</b>	<b>Jun</b>	<b>Jul</b>	<b>Aug</b>	<b>Sep</b>	<b>Oct</b>	<b>Nov</b>	<b>Dec</b>	<b>Jan</b>	<b>Feb</b>	<b>Mar</b>	
2006/07	71.91%	71.70%	71.59%	71.91%	71.81%	22.78%	65.30%	70.15%	70.21%	70.83%	71.32%	71.76%	
2007/08	71.87%	72.09%	72.50%	63.68%	72.53%	56.57%	67.42%	70.04%	70.51%	71.13%	71.55%	72.46%	
2008/09	73.15%	74.04%	74.88%	74.59%	59.08%	17.40%	69.21%	75.53%	75.21%	76.17%	76.19%	76.73%	
2009/10	76.89%	77.64%	77.90%	78.06%	72.49%	43.33%							



## East Sussex LAA Delivery Plan



East Sussex Strategic Partnership

### Introduction

The following delivery plan is for NIS 117: Reduce the proportion of young people aged between 16-18 years who are not in education, employment or training.

### Steering Group

The East Sussex LAA NEET Group will oversee and monitor the implementation of the NEET reduction strategy and delivery plan. The Group is chaired by Fiona Wright, Head of Strategic Development (Quality, Learning and Skills) and meets every two months. The current membership is comprised of representatives from the main partners and stakeholders.

Fiona Wright	ESCC Learning and Schools Effectiveness
Jessica Stubbings	ESCC 14-19 Development Team
Alastair Lee	ESCC Performance and Planning
Colin Edgley	ESCC Youth Development and Support Service (YDSS)
Carleton Astley	ESCC Partnerships and Planning

### Connexions Service Provider Representatives:

Alistair McGrory	ESCC
Stephen Tregidgo	VTE
Rachel Britt	CRI

### Partner Agency Representatives:

Chris Piper	LSC
Candice Miller	Supporting People
Monica Adams -ActonHastings	Borough Council
Brenda Mason	Rother District Council

### Resources

The resources for the activities and initiatives described in this plan are drawn from a number of sources. Outline of how the activity is resourced i.e. mainstream budget of which department/ organisation(s), specific budgets, identification of any known budget shortfall that may impact on delivery

### ESCC Children Service

- Connexions Service £4.1m (including NEET Initiative Fund)

### Learning and Skills Council

- Teenage Parents Provision - £44,440
- Practical Learning Collaboration Fund - £44,500

### Hastings Borough Council

- Area based grant £1.6m

## Delivery Plan

<b>National Indicator:</b>	<b>NIS No: 117</b>				
	<b>Definition: 16 – 18 year olds who are not in education, employment or training (NEET) PSA 14</b>				
<b>Performance:</b>	<b>Baseline</b>	<b>08/09</b>	<b>09/10</b>	<b>10/11</b>	
	8.0%	7.0%	6.2%	5.4%	
<b>Indicator Lead:</b>	<p><b>Fiona Wright,</b>  <b>Head of School Standards and Learning Effectiveness (11-19)</b>  <b>East Sussex County Council</b>  <a href="mailto:Fiona.Wright@eastsussex.gov.uk">Fiona.Wright@eastsussex.gov.uk</a></p>				
<b>Partners:</b>	<p><b>Learning &amp; Skills Council – Chris Piper</b>  <b>Connexions Service External Providers – VT Enterprise (Julie Langdon) &amp; CRI (Rachel Britt)</b>  <b>Rother District Council – Scott Lavoche</b>  <b>Hastings Borough Council – Monica Adams-Acton</b>  <b>East Sussex Downs and Weald PCT -</b>  <b>Job Centre Plus – Graham Coffey</b>  <b>Supporting People – Candice Miller</b>  <b>ESCC Children Services, Youth Development and Support Service (YDSS) – Colin Edgley</b>  <b>Secondary Schools, Training Providers and FE Colleges</b>  <b>14-19 Strategic Partnership Board and Local Area Partnership Boards</b></p>				
<b>Steering Group/ Partnership:</b>	<p><b>LAA NEET Group</b></p> <p><b>Reports on NEETs are also made to the 11-19 Partnership, Connexions Management Board, 14-19 Strategic Partnership Board</b></p>				
<b>Specific Sub Targets:</b>	<ul style="list-style-type: none"> <li>• <b>Unknowns below 5%</b></li> <li>• <b>Care Leavers into EET</b></li> <li>• <b>Young Offenders in EET</b></li> <li>• <b>60 % Teenage mothers in EET by 2010</b></li> <li>• <b>76.8 % of young people achieving a Level 2 qualification by the age of 19 by 2010</b></li> <li>• <b>16 – 18 year olds in EET</b></li> <li>• <b>Rother DC NEET</b></li> <li>• <b>Hastings BC NEET</b></li> </ul>				

<p><b>Links with Other Plans:</b></p>	<ul style="list-style-type: none"> <li>• <b>ESCC Children &amp; Young People Plan –</b> <a href="https://czone.eastsussex.gov.uk/partnershipsinitiatives/cypp/Pages/main.aspx">https://czone.eastsussex.gov.uk/partnershipsinitiatives/cypp/Pages/main.aspx</a></li> <li>• <b>Council Plan 2009 / 10 – Policy steer 5.11</b> <a href="http://www.eastsussex.gov.uk/yourcouncil/about/keydocuments/councilplan">http://www.eastsussex.gov.uk/yourcouncil/about/keydocuments/councilplan</a></li> <li>• <b>14-19 Team Performance Improvement Plan – available on c-zone</b></li> <li>• <b>14-19 Strategy (inc. Employer Engagement; RPA Strategy; Into EET Strategy, Transport Strategy) - available on c-zone</b></li> <li>• <b>LSC Statement of Priorities - <a href="http://www.lsc.gov.uk">www.lsc.gov.uk</a></b></li> <li>• <b>Progress Checks (GOSE) – available on c-zone</b></li> </ul>											
<p><b>Risks/Barriers:</b></p>	<table border="1"> <thead> <tr> <th data-bbox="488 499 1167 528">Risk/Barrier</th> <th data-bbox="1178 499 2067 528">Mitigating Action</th> </tr> </thead> <tbody> <tr> <td data-bbox="488 533 1167 746"> <p><b>1. Range of provision targeted at disengaged YP</b> Threat - Change management process not keeping pace with target, in particular through a lack of input from other CSD divisions and external partners.</p> </td> <td data-bbox="1178 533 2067 746"> <ul style="list-style-type: none"> <li>• Some funding secured via bidding process streams and some courses commissioned for provision for Young People to go on courses to meet identified need.</li> <li>• Longer term provision to be identified</li> <li>• Regular monitoring of provider led development of services NEET reference group monitor on an issues basis</li> </ul> </td> </tr> <tr> <td data-bbox="488 751 1167 927"> <p><b>2. Connexions Service Providers working separately to reduce NEETs</b> Threat – Different contracts leading to inconsistent &amp; separate working arrangements.</p> </td> <td data-bbox="1178 751 2067 927"> <ul style="list-style-type: none"> <li>• Connexions Management Board has been established to oversee integrated approach to service provision, support contract implementation and monitor KPIs on a quarterly basis.</li> <li>• Implement joint working protocols</li> </ul> </td> </tr> <tr> <td data-bbox="488 932 1167 1225"> <p><b>3. Fewer employment &amp; training opportunities due to Economic downturn</b> Threat – Fewer employers providing employment with training as well as fewer first job opportunities for young people.</p> </td> <td data-bbox="1178 932 2067 1225"> <ul style="list-style-type: none"> <li>• Closer working with Job Centre plus.</li> <li>• Introduction of Job Broker role within VTE</li> <li>• Implement Employer Engagement Strategy</li> <li>• Develop work experience for young people in the Public Sector</li> <li>• Develop a work experience database of employers who would be willing to offer a short term placement to long term NEET YPs.</li> </ul> </td> </tr> <tr> <td data-bbox="488 1230 1167 1399"> <p><b>4. Transfer of 16 – 19 funding to Local Authority impacting on commissioning and continuity of provision.</b> Threat – Destabilising of existing provision and support for young people.</p> </td> <td data-bbox="1178 1230 2067 1399"> <ul style="list-style-type: none"> <li>• Close working with LSC to ensure smooth transfer of responsibilities</li> </ul> </td> </tr> </tbody> </table>		Risk/Barrier	Mitigating Action	<p><b>1. Range of provision targeted at disengaged YP</b> Threat - Change management process not keeping pace with target, in particular through a lack of input from other CSD divisions and external partners.</p>	<ul style="list-style-type: none"> <li>• Some funding secured via bidding process streams and some courses commissioned for provision for Young People to go on courses to meet identified need.</li> <li>• Longer term provision to be identified</li> <li>• Regular monitoring of provider led development of services NEET reference group monitor on an issues basis</li> </ul>	<p><b>2. Connexions Service Providers working separately to reduce NEETs</b> Threat – Different contracts leading to inconsistent &amp; separate working arrangements.</p>	<ul style="list-style-type: none"> <li>• Connexions Management Board has been established to oversee integrated approach to service provision, support contract implementation and monitor KPIs on a quarterly basis.</li> <li>• Implement joint working protocols</li> </ul>	<p><b>3. Fewer employment &amp; training opportunities due to Economic downturn</b> Threat – Fewer employers providing employment with training as well as fewer first job opportunities for young people.</p>	<ul style="list-style-type: none"> <li>• Closer working with Job Centre plus.</li> <li>• Introduction of Job Broker role within VTE</li> <li>• Implement Employer Engagement Strategy</li> <li>• Develop work experience for young people in the Public Sector</li> <li>• Develop a work experience database of employers who would be willing to offer a short term placement to long term NEET YPs.</li> </ul>	<p><b>4. Transfer of 16 – 19 funding to Local Authority impacting on commissioning and continuity of provision.</b> Threat – Destabilising of existing provision and support for young people.</p>	<ul style="list-style-type: none"> <li>• Close working with LSC to ensure smooth transfer of responsibilities</li> </ul>
Risk/Barrier	Mitigating Action											
<p><b>1. Range of provision targeted at disengaged YP</b> Threat - Change management process not keeping pace with target, in particular through a lack of input from other CSD divisions and external partners.</p>	<ul style="list-style-type: none"> <li>• Some funding secured via bidding process streams and some courses commissioned for provision for Young People to go on courses to meet identified need.</li> <li>• Longer term provision to be identified</li> <li>• Regular monitoring of provider led development of services NEET reference group monitor on an issues basis</li> </ul>											
<p><b>2. Connexions Service Providers working separately to reduce NEETs</b> Threat – Different contracts leading to inconsistent &amp; separate working arrangements.</p>	<ul style="list-style-type: none"> <li>• Connexions Management Board has been established to oversee integrated approach to service provision, support contract implementation and monitor KPIs on a quarterly basis.</li> <li>• Implement joint working protocols</li> </ul>											
<p><b>3. Fewer employment &amp; training opportunities due to Economic downturn</b> Threat – Fewer employers providing employment with training as well as fewer first job opportunities for young people.</p>	<ul style="list-style-type: none"> <li>• Closer working with Job Centre plus.</li> <li>• Introduction of Job Broker role within VTE</li> <li>• Implement Employer Engagement Strategy</li> <li>• Develop work experience for young people in the Public Sector</li> <li>• Develop a work experience database of employers who would be willing to offer a short term placement to long term NEET YPs.</li> </ul>											
<p><b>4. Transfer of 16 – 19 funding to Local Authority impacting on commissioning and continuity of provision.</b> Threat – Destabilising of existing provision and support for young people.</p>	<ul style="list-style-type: none"> <li>• Close working with LSC to ensure smooth transfer of responsibilities</li> </ul>											

**ACTION PLAN FOR 2009 / 10**

Activity	Timescale	Interim Measure + frequency of measurement	Partner	Named link
<b>STRAND 1 – PROVISION OF OPPORTUNITIES</b>				
<p>Develop, implement and monitor a range of CSA &amp; LSC funded provision targeting young people who have disengaged or facing barriers to going into EET.</p> <p><b>2 small projects funded (up to £5000) each as pump priming for NEET activities.</b> Expressions of interest to be sought from partners.</p> <p><b>7 Fast Lane programmes at venues across the county targeting 70 participants.</b></p>	April 2009 – March 2010	<p>50% of young people NEET who access provision progress into EET. Monitored in August and December 2009 and April 2010.</p> <p><b>Fast lane programmes participants to achieve 70% confirmed or identified progression at the end of the course and 50% in EET 3 months after course end.</b></p>	ESCC LSC	<p>Jessica Stubbings(ESCC) 01323 463537 <a href="mailto:Jessica.Stubbings@eastsussex.gov.uk">Jessica.Stubbings@eastsussex.gov.uk</a></p> <p>Chris Piper (LSC) 01273 783647 <a href="mailto:chris.piper@lsc.gov.uk">chris.piper@lsc.gov.uk</a></p>
<p>Expand &amp; coordinate provision of accredited educational opportunities for young parents across the whole county with introduction of Parents with Prospects course in western area.</p> <p><b>5 Teenage Parents courses offered at venues across the County. Targeting 60 teenage parents.</b></p>	April 2009 – March 2010	Maintain 20% of 16-19 year old young mothers in EET at end of each quarter and achieve target of 80 by March 2010.	ESCC PCT CRI	<p>Rachel Britt (CRI) 01424 423344 <a href="mailto:Rachel.britt@cri.org.uk">Rachel.britt@cri.org.uk</a></p>

<p><b>CRI develop and deliver an AQA accredited home study teenage parents module. Delivered to 40 teenage parents across the County</b></p>				
<p>Pilot Entry to Learning project across the coastal strip that will provide bridging provision into formal learning for 16 / 17 year old NEETs.</p>	<p>April 2009 – March 2010</p>	<p>70 16/17 yr old NEETs in learning by April 2010.</p>	<p>CRI VTE</p>	<p>Rachel Britt (CRI) 01424 423344 <a href="mailto:Rachel.britt@cri.org.uk">Rachel.britt@cri.org.uk</a></p>
<p>Monitor the implementation of September Guarantee for 16 year olds &amp; 17 year olds. Including running a Clearing House event in September 2009.</p>	<p>April 2009 – October 2009</p>	<p>70% year 11 students receive an appropriate offer of education or training place by end of May 09 and 95% by end of September 09.</p> <p>40% of year 12 students receive an offer by end of May and 76% by end of September 09.</p>	<p>ESCC</p>	<p>Jessica Stubbings (ESCC) 01323 463537 <a href="mailto:Jessica.Stubbings@eastsussex.gov.uk">Jessica.Stubbings@eastsussex.gov.uk</a></p>
<p>Establish procedures and work with a range of partners to implement KS4 SEP and ESF NEET reduction/prevention projects.</p> <p><b>KS4 Programme 214 learners participate in East Sussex ESF KS4 pre-engagement programme 150 learners participate across East Sussex and Brighton and Hove</b></p>	<p>April 2009 – October 2009</p>	<p>Successful plan in place to implement programmes and meet learner targets. Report at end of August, December, April.</p>	<p>ESCC</p>	<p>Julie Dougill (ESCC) 01323 463536 <a href="mailto:Julie.Dougill@eastsussex.gov.uk">Julie.Dougill@eastsussex.gov.uk</a></p>

LAA Exemplar Project in the Rother area, 'Young Pioneers'. Working with young people disengaged 14-16 year olds to develop leadership skills and support progression.		8 Young people to complete the programme and progress.		Carleton Astley(ESCC) 01424 724092 <a href="mailto:carelton.astley@eastsussex.gov.uk">carelton.astley@eastsussex.gov.uk</a>
Introduce data gathering procedures for improving identification of demand for learning and commissioning of provision.	May 2009 ongoing	All PAs inputting destination for young people NEET by end of May 09. Data collated and disseminated quarterly as from end of June 09.	ESCC	Alastair Lee (ESCC) 01273 481468 <a href="mailto:Alastair.Lee@eastSussex.gov.uk">Alastair.Lee@eastSussex.gov.uk</a>
Keep on Track – Provision of an alternative curriculum based on Foundation Learning Tier learning principles to targeted year 9 students at risk of disengaging from Hastings secondary schools	September 2009 – July 2010	Reports provided in December and April.	Hastings College	Monica Adams-Acton (Hastings Brough Council) 01424 451066 <a href="mailto:madams-acton@hastings.gov.uk">madams-acton@hastings.gov.uk</a>
Back on Track – Provision for learners who fail to take up their September Guarantee offer at FE College	October 2009 – January 2010.	Reports provided in December and April.	Hastings College	Monica Adams-Acton (Hastings Brough Council) 01424 451066 <a href="mailto:madams-acton@hastings.gov.uk">madams-acton@hastings.gov.uk</a>
Alternative Track – Provision for hard to reach NEETs to develop young people's social skills and support their entry to vocational learning at FE College	September 2009 – March 2010.	Reports provided in December and April.	Hastings College	Monica Adams-Acton (Hastings Brough Council) 01424 451066 <a href="mailto:madams-acton@hastings.gov.uk">madams-acton@hastings.gov.uk</a>
<b>STRAND 2 - SUPPORT FOR TRANSITION AND REMOVAL OF BARRIERS</b>				
Introduce Progression Guidance document amongst all secondary schools and post 16 providers in order to improve coordination and collaboration of support for	April 2009 – June 2009	Evaluation of document carried out between September and November and any changes made by end of December 09.	ESCC	Julie Dougill (ESCC) 01323 463536 <a href="mailto:Julie.Dougill@eastsussex.gov.uk">Julie.Dougill@eastsussex.gov.uk</a>

students moving from compulsory education to post 16 provision		Year 11 progression workshops held in the autumn term 2009.		
Improve collaborative working between Connexions PAs and ESCC SEN team in order to ensure better transition into FE for vulnerable learners.	April 2009 – Sept 2010	Regular monitoring and training sessions between VTE and CSA to review progress Training and support offered to other CXS partners	ESCC	Lynne Bayes (ESCC) 01273 481985 <a href="mailto:Lynne.Bayes@eastsussex.gov.uk">Lynne.Bayes@eastsussex.gov.uk</a>  Barbara Davey(VTE) 01323 745500 <a href="mailto:Barbara.Davey@vtplc.com">Barbara.Davey@vtplc.com</a>
Establish clear and effective evaluation and monitoring processes and procedures for the implementation of the new IAG standards.	April 2009 on going	Roles and responsibilities of CSA, LAPBs, Schools / Colleges and Connexions Providers in the implementation of the new standards are understood.	ESCC	IAG Development Manager (ESCC) To be appointed
Implement early leaver protocol and the post-16 RONI across all post 16 providers including procedures for specific groups in order to improve support for young people and reduce the number who drop out of educational provision.	April 2009 - September 2009	Reduction in the number of early leavers in comparison to previous year. Baselines: Nov – Dec 2008 117 Early Leavers. Jan – March 09 177 early leavers. Report in January and April.	ESCC	Jessica Stubbings(ESCC) 01323 463537 <a href="mailto:Jessica.Stubbings@eastsussex.gov.uk">Jessica.Stubbings@eastsussex.gov.uk</a>
Continue with the operation of a Client Fund to support individual young people to purchase materials / equipment / activities that enable them to access EET. <b>Introduction of a Client Fund for 14-16 year olds and a Client Fund specifically for transport support for E2E learners.</b>	April 2009 ongoing	300 young people access the funds. Funds usage and referral monitored monthly. Reports provided August, December and April.	ESCC VTE	Julie Langdon(VTE) 01424 425780 <a href="mailto:Julie.Langdon@vtplc.com">Julie.Langdon@vtplc.com</a>

Enable young people to access IAG by implementing new branding guidelines for promoting Connexions 360 Service	April 2009 ongoing	Branding guidelines published by Dec 2009  Monitor usage of new brand in April 2009	ESCC VTE CRI	Alison Rendle (ESCC) 01323 463535 <a href="mailto:Alison.rendle@eastsussex.gov.uk">Alison.rendle@eastsussex.gov.uk</a>
Ensure effective implementation of e-products like area prospectus and careers etc that provide access to information about opportunities by young people and their parents / carers.	April 2009 ongoing	Increase usage of e-products by young people and their parents / carers. Training sessions in all LAPB areas conducted by December 09	ESCC VTE	Sue Whittaker (VTE) 01323 745500 <a href="mailto:Sue.Whittaker@vtplc.com">Sue.Whittaker@vtplc.com</a>  Jane Garland (VTE) 07725759148 <a href="mailto:jane.Garland@vtplc.com">jane.Garland@vtplc.com</a>
Develop co-location of practitioners in Connexions Centres and Access points across the county	April 2009 – September 2009	Joint plan for CRI and VTE for the CXS centre in Eastbourne and with the YMCA in Lewes to be completed and implementation started by June. Other providers to be involved in the role out.	VTE ESCC CRI PCT	Julie Langdon(VTE) 01424 425780 <a href="mailto:Julie.Langdon@vtplc.com">Julie.Langdon@vtplc.com</a>
Delivery of transition project for young people within uncertain destinations, 40 learners to be involved, projects in 5 locations (one in each District Borough)	April 09 – October 2010	32 young people have a confirmed post-16 destination and start their college course in September.  Review in November.	YDSS/ Connexions	Colin Edgley (YDSS, ESCC) 01424 724106 <a href="mailto:colin.edgley@eastsussex.gov.uk">colin.edgley@eastsussex.gov.uk</a>
Establish Youth Access offer across East Sussex providing young people who have a wide range of risk factors access to Information and Advice and	May 09 – ongoing.	Youth Access core offer established in 4 locations across East Sussex (Hastings, Bexhill, Eastbourne, Newhaven)	YDSS	Colin Edgley (YDSS, ESCC) 01424 724106 <a href="mailto:colin.edgley@eastsussex.gov.uk">colin.edgley@eastsussex.gov.uk</a>



support out of core working hours.		Open access one-stop shops established for a wide range of Information advice and support for young people in Hastings, Crowborough, Hailsham, Newhaven.		
<b>STRAND 3 - IDENTIFICATION &amp; DEVELOPMENT OF LEARNER CAPABILITIES, SKILLS AND ATTITUDES</b>				
Co-ordinate working practices and improve communication between Connexions PAs and Housing Depts. Focus work in Rother developing improved links with the Family Intervention Project and with their Worklessness Officer.	April 2009 – Dec. 2010	Reduce by 50 the number over the year of young people who have accommodation support issues and are NEET.	ESCC	<p>Rachel Britt (CRI) 01424 423344 <a href="mailto:Rachel.britt@cri.org.uk">Rachel.britt@cri.org.uk</a></p> <p>Alison Spring (Rother District Council) 01424 787591 <a href="mailto:Alison.spring@rother.gov.uk">Alison.spring@rother.gov.uk</a></p>
VTE commissioned to employ Job Broker to proactively secure employment and apprenticeship opportunities for young people deemed ready for employment in Eastbourne.	May 2009 – April 2010	<p>Contact with employers targets:</p> <ul style="list-style-type: none"> <li>- 60 per quarter</li> </ul> <p>Identify vacancies for NEETs</p> <ul style="list-style-type: none"> <li>- 18 per quarter</li> </ul> <p>No of YP placed on courses</p> <ul style="list-style-type: none"> <li>- 8 per quarter</li> </ul> <p>No of YP into employment</p> <ul style="list-style-type: none"> <li>- 8 per quarter</li> </ul> <p>Reports provided each quarter.</p>	VTE	<p>Julie Langdon(VTE) 01424 425780 <a href="mailto:Julie.Langdon@vtplc.com">Julie.Langdon@vtplc.com</a></p>
VTE has aligned its internal employer work undertaken by its universal PA's to NEET reduction and prevention outcomes:	April 2009 ongoing	<p>The outcomes which will be tracked quarterly as part of the review process are:</p> <p><u>Pre 16</u></p> <p>1.To identify the YP whose intended destinations are</p>	VTE	<p>Julie Langdon(VTE) 01424 425780 <a href="mailto:Julie.Langdon@vtplc.com">Julie.Langdon@vtplc.com</a></p>

		<p>employment and training and do not have a Sept guarantee - to proactively try to place them in their chosen destination</p> <p>2. To produce LMI leaflets which are localised to LAPB's to help support YP's job seeking and career plans with accurate , robust local employment information</p> <p><u>Post 16</u></p> <p>1.To identify NEET YP who have an intended destination of employment and training and to proactively try to place them (should help pick up on this area identified as a source of a NEET increase)</p> <p>2. To be more effective in placing YP using the full range of employer and vacancies sources and experiences</p> <p>3. To arrange work experience placements for YPs who have been NEET for 6 months plus.</p>		
--	--	---	--	--

<b>STRAND 4 – CAREFUL TRACKING</b>				
Carefully track all young people and make sure all details are recorded on Connexions data base.	April 2009 – March 2010	Percentage of unknowns maintained under 5%	CRI VTE ESCC	<p>Julie Langdon(VTE) 01424 425780 <a href="mailto:Julie.Langdon@vtplc.com">Julie.Langdon@vtplc.com</a></p> <p>Rachel Britt (CRI) 01424 423344 <a href="mailto:Rachel.britt@cri.org.uk">Rachel.britt@cri.org.uk</a></p> <p>Alistair McGory (ESCC) 01424 726054 <a href="mailto:Alistair.McGory@eastsussex.gov.uk">Alistair.McGory@eastsussex.gov.uk</a></p>
Ensure quality and robustness of data recorded on Aspire by implementing a schedule of audits and providing regular briefings and training for Connexions PAs and YDS youth workers.	April 2009 – March 2010	Schedule of audits implemented by June 09 and evaluated quarterly.	ESCC	<p>Alastair Lee (ESCC) 01273 481468 <a href="mailto:Alastair.Lee@eastSussex.gov.uk">Alastair.Lee@eastSussex.gov.uk</a></p>
Introduce RONI (Risk of NEET Indicator) tool in all secondary schools in order to improve identification of students at risk of drop out and assign appropriate intervention / support.	April 2009 ongoing	All schools aware of tool by end of May and 50% of schools using tool with 2009 cohort of year 11s.	ESCC	<p>Julie Dougill (ESCC) 01323 463536 <a href="mailto:Julie.Dougill@eastsussex.gov.uk">Julie.Dougill@eastsussex.gov.uk</a></p>
Co-ordinate and monitor interventions made by Connexions PAs on young people on NEET register in Hastings, Rother, Eastbourne and Newhaven areas.	April 2009 - March 2010	Progress 100 young people NEET per quarter into EET and at same time maintain level of unknowns below 5%.	ESCC	<p>Julie Langdon(VTE) 01424 425780 <a href="mailto:Julie.Langdon@vtplc.com">Julie.Langdon@vtplc.com</a></p> <p>Rachel Britt (CRI) 01424 423344 <a href="mailto:Rachel.britt@cri.org.uk">Rachel.britt@cri.org.uk</a></p>

				Alistair McGory (ESCC) 01424 726054 <a href="mailto:Alistair.McGory@eastsussex.gov.uk">Alistair.McGory@eastsussex.gov.uk</a>
Improve sharing of information between key stakeholders and in particular with Job Centre Plus to identify young people who are NEET (and should be recorded as in EET) as well as young people who Personal Advisers have lost contact with.	April 2009 ongoing	ensure that all young people who engage with YASS (which is about 400 a year) know who their PA is and how to contact them as part of their engagement and that all actions taken by YASS are recorded on Aspire	VTE CRI ESCC JCP Supporting People	Rachel Britt (CRI) 01424 423344 <a href="mailto:Rachel.britt@cri.org.uk">Rachel.britt@cri.org.uk</a>